

SOMERSET CRICKET FOUNDATION

SCF BOARD SAFEGUARDING LEAD

Job Description

Somerset Cricket Foundation

Established as a charitable trust in 2021, and based at the Cooper Associates County Ground. Our aim is to engage, inspire and develop clubs and communities to improve people's lives through cricket. To achieve this we will develop a thriving network of clubs, a diversity of player participants and volunteer workforce, and endeavour to take cricket to the community. Central to this ambition, our Safeguarding strategy aims to create a safe environment for the various stakeholders in the game.

The Role

We seek a person to lead the Somerset Cricket Foundation (SCF) in meeting the requirements of the Safeguarding Standards within the ECB County Partnership Agreement.

To ensure SCF always acts in keeping with legislation, statutory guidance and ECB Safe Hands Policy.

To be an active Board Member advocating for the safeguarding of children (under the age of 18) and adults at risk in cricket.

To recognise that all children and young people and all adults at risk are entitled to the same protection as per the Equality Act 2010 Protected Characteristics information.

The position as a Trustee of this charity is unpaid, but will allow reasonable expenses.

Responsibilities

- Ensure safeguarding is embedded as a key business responsibility in operating plans and structures.
- Ensure the Board receives and scrutinises progress against key areas of work, risks and challenges.
- Check and challenge to ensure that the interests of children and young people are paramount in all SCF activities, and the best interests of adults at risk are given due consideration.

- Constructively challenge poor practice and effect change.
- Follow the whistle-blowing policy if any concerns are not fully addressed by SCF/SCCC.
- To work closely with the SCF Safeguarding Officer, offering guidance and support where required.

Essential Experience

Child centred approach, with children as the focus in decision making, advocating for young people’s views.

Ability to demonstrate effective governance and a strategic approach.

Experience of safeguarding and child protection.

Experience and knowledge of safeguarding adults.

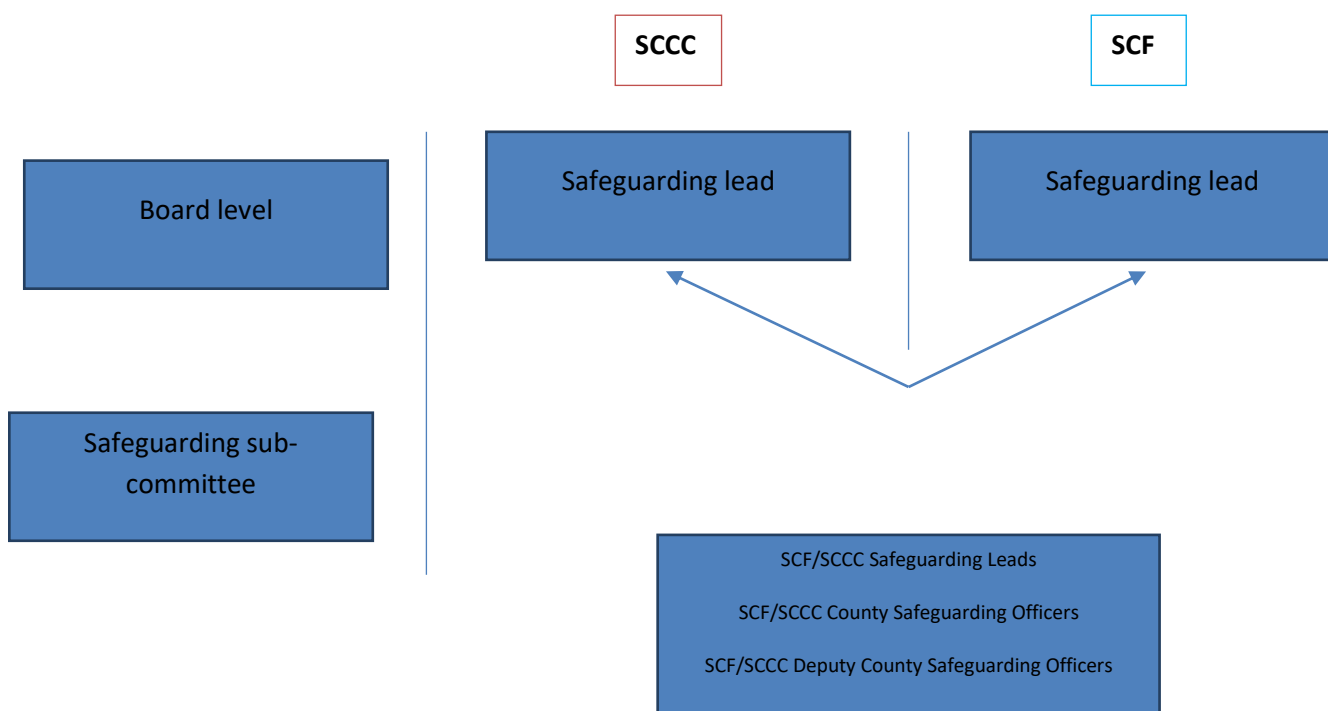
Understanding of the ECB’s role and responsibilities to safeguard the welfare of children and young people.

Basic understanding of and enthusiasm for the game of cricket.

Awareness and understanding of ECB Safe Hands Policy.

Ability to listen effectively and to ask probing questions.

Model of the Combined Safeguarding Structure for SCF and SCCC



Summarising the above:

1. A joint Safeguarding structure shared equally between SCF and SCCC, which will ensure a consistent and coordinated approach across the whole county.
2. Each organisation will have (a) a non Exec Director (SCCC) and Trustee (SCF) Lead Officer, each reporting to their respective Governing Boards, (b) trained employees in each organisation with a Safeguarding remit, (c) Safeguarding volunteers operating in specific areas e.g. Clubs and Leagues, Women and Girls etc.